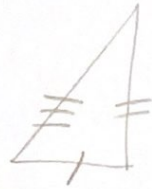


Triangles

• triangle quelconque

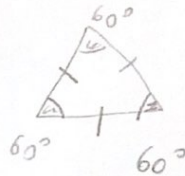


• triangle isocèle



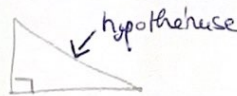
= 2 côtés égaux

• triangle équilatéral



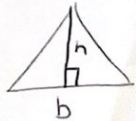
= 3 côtés égaux
+ 3 angles à 60°

• triangle rectangle

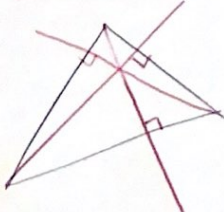


1 triangle avec 1 angle droit

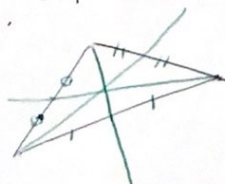
⇒ la somme des angles d'un triangle fait 180°

⇒ formule de l'aire d'un triangle $A = \frac{b \times h}{2}$ 

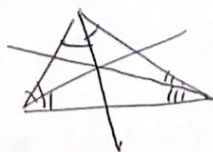
Hautures



Médianes



Bissectrices



Médiatrices

